

*Transforming Lives  
Through Vision*  
**For a Brighter Tomorrow, Today**



A capital campaign to redefine community healthcare through vision, compassion, and innovation.



# Transforming Lives Through Vision



Dear Friends and Fellow Visionaries,

In 1925, Helen Keller challenged the Lions Clubs International to become "Knights of the Blind in the crusade against darkness." For over 50 years, Lions World Vision Institute has proudly answered that call, becoming a steadfast advocate for ocular health. We've been pioneers in sight restoration, tissue transplantation, groundbreaking research, and unwavering champions of prevention and education for those most in need. Our dedication has brightened countless lives with stories of success and hope.

Now, as we embark on our next 50 years, we are driven by a bold, new vision. We are committed to not only continuing our legacy, but also expanding our impact by addressing the critical service gaps that persist in our community, particularly for children. To realize this vision, we are building a Vision Health Center in Ybor City that will provide top-tier clinic care and community programming. This center will be a beacon of hope for the uninsured and underinsured, ensuring that everyone has access to the vision health services they need. Join us in this transformative journey as we continue to illuminate lives for generations to come.

Sincerely,

*Jason Woody*

Jason Woody

President & Chief Executive Officer



# For a Brighter Tomorrow, Today

The LWVI vision health program focuses on early vision intervention and improving access to vision care, especially for children. We are working to address alarming national statistics showing that one in four children has an undiagnosed vision problem, and one in five cannot afford the vision care they need. Vision problems are directly linked to reading proficiency, which is especially concerning given that one in six children who are not reading proficiently by third grade will not graduate from high school on time, or at all. According to the Florida Department of Education, only **53% of third graders in Hillsborough County are reading proficiently**, compared to **57% statewide** and **65% in neighboring Pinellas County**. While progress has been made, significant gaps remain, and urgent action is still needed. For many of these students, a simple pair of glasses can be transformative—improving their ability to learn and increasing their chances of long-term success in school and beyond.

## Annual Impact

Programs and Services	FY24	Yr. 1 Projections
Vision Screenings	5,482	10,964
Eye Exams	2,304	4,608
Eye Glasses Distributed	1,883	3,766
Mobile Unit/Community Clinics	83	180
Referrals to VHC	N/A	1,096
Clinical Patients	N/A	12,696
<b>Total Impact</b>	N/A	23,660

### Did You Know....

Approximately 75% of the US population uses some form of vision correction.



1 in 4 children nationally has an undiagnosed vision problem that can lead to blindness if untreated.

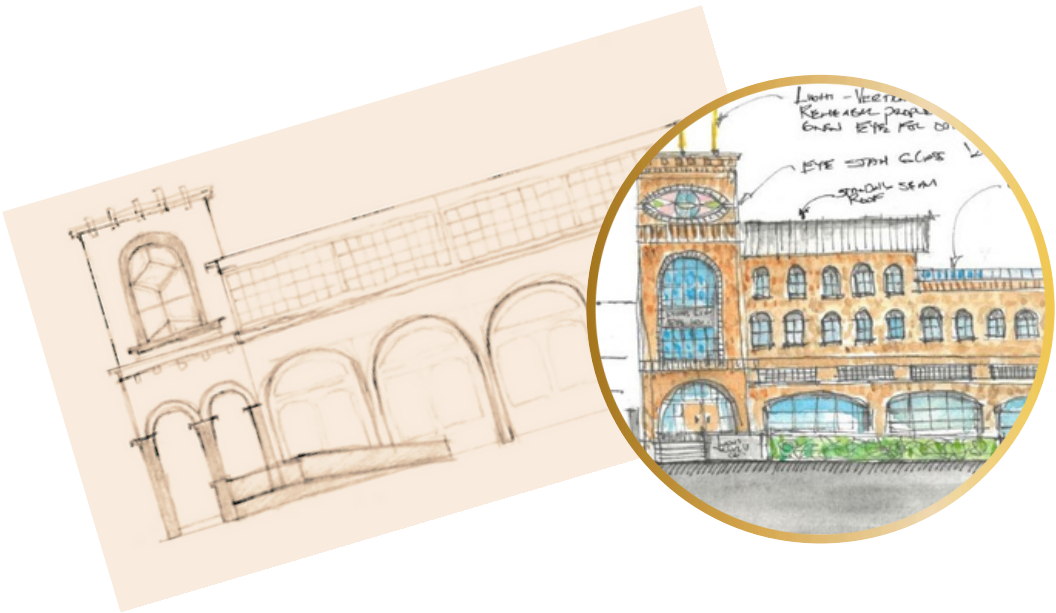
80% of children labeled as "learning disabled" have undiagnosed vision problems that can impede learning and social development.



45% of the Tampa Bay area falls under ALICE (Asset Limited, Income Constrained, Employed) and facing financial challenges. Limited resources hinder access to quality vision care, including eyeglasses, exams, and surgery.



# The Project



VIDEO WALKTHROUGH



## *Vision Care Accessible for All*

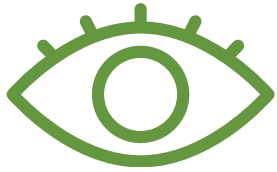
Like spokes on a wheel, there are many elements involved in improving healthcare access for people of all ages. For years, LWVI has been building these vital components—tackling obstacles like limited transportation, lack of health insurance, financial barriers, and language challenges. The Vision Health Center will serve as the hub that brings all of these efforts together. Without this central point, children may struggle with educational success, adults could face barriers in maintaining their independence and work productivity, and seniors remain at increased risk of falls, injuries, cognitive decline, and social isolation. The Vision Health Center will be the crucial connection point needed to provide comprehensive, accessible care, impacting thousands in Tampa Bay and creating a replicable model for other LWVI service areas.



Hub and Spoke Model



# *Vision Care Accessible for All*



## **Patient Care**

Dedicated state-of-the-art facility with 6 exam lanes.  
First of its kind Vision Health Center with an emphasis on Pediatrics in Central Florida.



## **Community**

Pediatric vision care. Diabetic and glaucoma screenings. Free care for the uninsured. Public education to prevent vision loss.



## **Research**

Innovative research space driving breakthroughs in clinical care and product development.



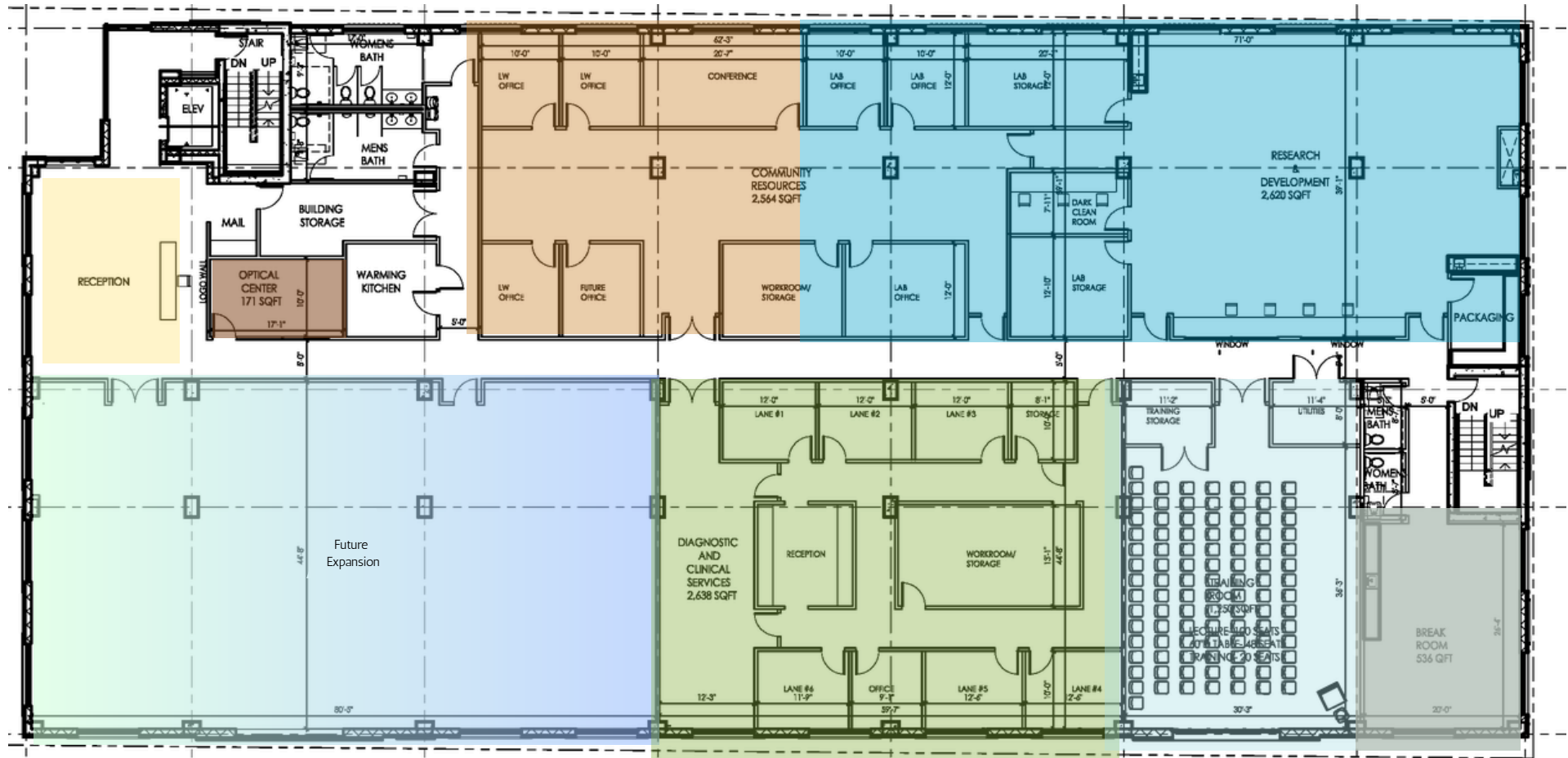
## **Education**

Training tomorrow's ophthalmologists, advancing surgical skills, and supporting wrap-around community care.



## Vision In Action

The Vision Health Center will be located directly across from LWVI headquarters. This three-story building includes two floors of parking and 30,000 square feet of clinical, research and community space, reflecting the historic beauty of Ybor and offering room for future expansion.



- A welcoming lobby, designed for hosting field trips, large gatherings, and providing a pre-function area for seminars and training
- The clinical space will have 6 fully equipped exam lanes serving the low-income families in our community and referrals from our mobile/community clinics
- The new home of LWVI's Research and Development will focus on groundbreaking research to find treatments and cures for ocular diseases
- State-of-the-art Education and Training space, divisible into two rooms, serving as a hub for surgical training, community education, and hands-on learning
- Shared spaces include an employee breakroom and conference spaces
- The LWVI Foundation and Pediatric Vision Health team will relocate to the new facility, using the Glazer Mobile Vision Clinic for outreach and referrals to the Center
- The Optical Center will initially provide same-day eyeglass fittings for eligible pediatric patients in need in partnership with local Opticianry programs



# *Vision In Action*



**CLINICAL SERVICES**



**RESEARCH LAB**



**CHILDREN'S VISION SPACE**



**STATE OF THE ART EQUIPMENT**



**STAFF WORKSPACE**



**EDUCATION AND TRAINING**

**Visit [www.lwvi.org](http://www.lwvi.org) for additional renderings and project updates**

# Build Your Legacy with our Invitation for Investment

**You are the key to bringing this vision to life.** We're counting on the generous support of our Tampa Bay and LWVI community. To meet our \$16 million project goal, we need to raise \$3 million in charitable contributions. Because of LWVI's strong financial management and 4-star rating from Charity Navigator, we're maximizing every available dollar through tax incentives and government funding, which has already secured half the total funds.

Now, we're asking for your help to complete this journey. With your involvement, **you can be the hero** who brings this vision to life and creates a legacy that will benefit our community for generations. We'd love to explore ways to align a naming opportunity with your personal or business goals. You can spread pledges over three years for added flexibility. To learn more or set up a meeting, please contact Sharon Boyes, CFRE, Foundation Executive Director, at 813-289-1200 ext. 714 or via email at [Sharon.Boyes@LWVI.org](mailto:Sharon.Boyes@LWVI.org). We look forward to working with you on this incredible mission!

## Naming Opportunities

Building Main .....	\$1,000,000	<u>End</u> Conference Room .....	\$25,000
Parking Entrance/Exit.....	\$500,000	Collaborative Breakroom.....	\$25,000
Education and Training Center .....	\$250,000	Interior Training Rooms (4) .....	\$25,000
Main Lobby .....	\$250,000	Pediatric Exam/Screening Room (4) ..	\$25,000
1st Floor Lobby .....	\$100,000	<u>End</u> Ex. Director Office .....	\$10,000
2nd Floor Lobby .....	\$100,000	Research Director Office .....	\$10,000
Research Center .....	\$50,000	Kitchen Exterior .....	\$10,000
Optical Lab .....	\$50,000	Work Room .....	\$10,000
LWVI Foundation Offices .....	\$50,000	AV Sponsor.....	\$10,000
Reception Desk .....	\$50,000	Training Room Table/Chairs (4) .....	\$10,000
Mission Marque.....	\$50,000	<u>End</u> Giving Wall .....	\$10,000
Collaborative Workspace .....	\$25,000	Donor Wall Tiles.....	\$1,000-\$5,000



# Visionary Founders Circle

At the heart of our mission is a future where every child sees clearly and every community member has access to life-changing vision care. We invite you to join this transformation through the **Visionary Founders Circle**, an exclusive group of changemakers dedicated to making a profound impact.

By committing **\$10,000 annually for three years**, Visionary Founders Circle members will help fund the construction of the groundbreaking Vision Health Center while also directly supporting community outreach programs and pioneering research that will shape the future of eye health.

**Your Legacy Beyond Naming Rights:** As a member, you'll be a partner in service. Experience the lives you're helping to transform through volunteer opportunities, exclusive briefings, and participation in our Vision Summits. Each year, you'll receive personalized reports with stories from patients whose futures have been forever changed.

## Exclusive Benefits:

- Intimate gatherings with vision care leaders
- VIP access to Vision Health Center events
- Direct involvement in community outreach
- Recognition as a Champion of Vision with leadership roles
- Premier recognition at our annual Eye Ball honoring your extraordinary commitment

Your legacy will live on not through a plaque, but in the clear eyes and bright futures of countless individuals. **Become a Visionary Founder Today.** Together, we can bring clarity, hope, and a brighter future to our community. Will you join us?





# WAYS TO GIVE

## **GIFTS OF CASH**

The easiest and most direct way of supporting this campaign is a gift of cash.

## **GIFTS OF STOCK**

Avoid capital gains while taking a full-value deduction on your tax returns by making a gift of highly appreciated stock.

## **QUALIFIED CHARITABLE DISTRIBUTIONS**

If you're over 70 ½, you can meet the required minimum distribution from your IRA by making a qualified charitable distribution of up to \$100,000 per year; you'll also lessen your taxable income.

## **RECURRING GIFTS**

Recognizing that many caring people may not have the capacity to make a sizeable gift at any one time, we suggest splitting your gift into manageable monthly gifts.

## **MATCHING GIFTS**

Many employers offer opportunities to match employee gifts.

## **PLANNED GIFTS**

Include LWVI in your estate plans and leave a legacy for your community.

### Questions?

Please contact Sharon Boyes, CFRE, Foundation Executive Director, at 813-289-1200 ext. 714 or via email at [Sharon.Boyes@LWVI.org](mailto:Sharon.Boyes@LWVI.org).



# Lions World Vision Institute Leadership

## Did You Know....



- 1 billion people live with vision impairment that could have been prevented or corrected.
- Unaddressed distance vision impairment is 4x more prevalent in low and middle-income regions.
- \$14.3 billion is needed to treat existing cases of refractive error and cataracts worldwide.



- U.S. ranks 5th among countries with the highest incidence of visual impairment.
- Vision loss and eye-related disorders exceeds more than \$153 billion every day.
- Cataracts are the top cause of blindness among older adults.



- 490,120 Floridians have a visual impairment.
- Florida is 2nd in the U.S. for macular degeneration, glaucoma, and cataracts.
- Florida is 3rd in diabetic retinopathy.

### INSTITUTE BOARD OF DIRECTORS

**Mike Griffin, Chair**

**Edwin Narain, Vice-Chair**

**Steve Short, Treasurer**

**Marie E. Chinnici-Everitt, Secretary**

**Benjamin Lambright, Medical Director**

**Carl Tremonti, Immediate Past Chair**

Peter Diniaco

Felicia Harvey

Andrew McIntosh

Douglas Pace

Mark Pitts

*Jason Woody, President and CEO*

### FOUNDATION BOARD OF DIRECTORS

**Steve Csenge, Chair**

**Kimberly Murray, Vice Chair**

**Hermann Wittje, Treasurer**

**Moses Allen, Secretary**

Dara Abraham

Gayle Guyardo

April Lufriu

Andreina "Andi" Simmons

Dawn Ullom

*Sharon Boyes, CFRE, Foundation Executive Director*



## Mission Statement:

To elevate standards in sight restoration, tissue transplantation, research, and education.

The Lions World Vision Institute Foundation serves as the stewards of a very precious gift – the gift of sight. As the charitable arm of the Lions World Vision Institute, we are grounded in the belief that everyone deserves the gift of sight. We restore sight in our community and around the globe through various programs.

1410 N. 21st. | Tampa FL 33605  
813.289.1200 | [foundation@lwvi.org](mailto:foundation@lwvi.org)  
[www.LWVI.org](http://www.LWVI.org)

Join LWVI in Creating a Brighter Tomorrow, Today

