



*Transforming Lives
Through Vision*
For a Brighter Tomorrow, Today

A capital campaign to redefine community healthcare through vision, compassion, and innovation.

Transforming Lives Through Vision

Dear Friends and Fellow Visionaries,

In 1925, Helen Keller challenged the Lions Clubs International to become "Knights of the Blind in the crusade against darkness." For over 50 years, Lions World Vision Institute has proudly answered that call, becoming a steadfast advocate for ocular health. We've been pioneers in sight restoration, tissue transplantation, groundbreaking research, and unwavering champions of prevention and education for those most in need. Our dedication has brightened countless lives with stories of success and hope.

Now, as we embark on our next 50 years, we are driven by a bold, new vision. We are committed to not only continuing our legacy, but also expanding our impact by addressing the critical service gaps that persist in our community, particularly for children. To realize this vision, we are building a Vision Health Center in Ybor City that will provide top-tier clinic care and community programming. This center will be a beacon of hope for the uninsured and underinsured, ensuring that everyone has access to the vision health services they need. Join us in this transformative journey as we continue to illuminate lives for generations to come.

Sincerely,

Jason Woody

Jason Woody

President & Chief Executive Officer



For a Brighter Tomorrow, Today

Did You Know....

Approximately 75% of the US population uses some form of vision correction.



1 in 4 children nationally has an undiagnosed vision problem that can lead to blindness if untreated.

80% of children labeled as "learning disabled" have undiagnosed vision problems that can impede learning and social development.



45% of the Tampa Bay area falls under ALICE (Asset Limited, Income Constrained, Employed) and facing financial challenges. Limited resources hinder access to quality vision care, including eyeglasses, exams, and surgery.

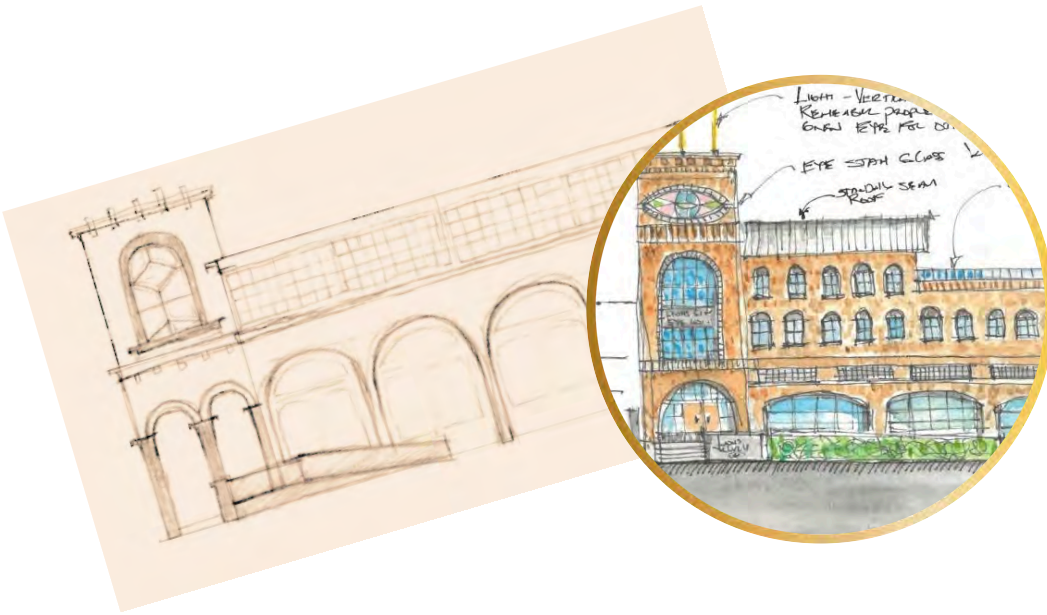


The LWVI Foundation has a focus on health equity and early vision intervention, especially with children. The Foundation is working to address alarming national statistics that one in four children has an undiagnosed vision problem, and one in five cannot afford the vision care they need. Vision problems are directly linked to reading proficiency, which is concerning since one in six children who are not reading proficiently by third grade do not graduate from high school on time. According to the Florida Department of Education, less than 23% of third graders in Hillsborough County read proficiently—compared to 25% in Florida and 44% in neighboring Pinellas County. It's clear that urgent action is needed. For many of these students, a simple pair of glasses can transform their lives, improving their ability to learn and increasing their chances of success in school and beyond.

Annual Impact

Programs and Services	Current	Projected
Vision Screening	4088	10,200
Eye Exams	2304	5,760
Eye Glasses Distributed	1883	4,700
Mobile Unit/Community Clinics	83	180
Referrals to VHC	N/A	1,020
Clinical Patients	N/A	34,000

The Project



Vision Care Accessible for All

Like spokes on a wheel, there are many elements involved in improving healthcare access for people of all ages. For years, LWVI has been building these vital components—tackling obstacles like limited transportation, lack of health insurance, financial barriers, and language challenges. The Vision Health Center will serve as the hub that brings all of these efforts together. Without this central point, children may struggle with educational success, adults could face barriers in maintaining their independence and work productivity, and seniors remain at increased risk of falls, injuries, cognitive decline, and social isolation. The Vision Health Center will be the crucial connection point needed to provide comprehensive, accessible care, impacting thousands in Tampa Bay and creating a replicable model for other LWVI service areas.



Hub and Spoke Model

Vision Care Accessible for All



Patient Care

Dedicated state-of-the-art facility with 12 exam lanes with first-of-its-kind Urgent Care



Community

Pediatric Eye Care, Diabetic and Glaucoma screenings
Free care for uninsured and underinsured populations
Public education programs



Research

Dedicated space for research activities
Focus on identifying and addressing gaps in clinical care and product development
Development of private companies for pharmaceutical acquisition



Education

Training site for the next generation of Ophthalmologists
Training site for surgeons to improve patient outcomes
Training Site for wrap-around community services



Better Together



Since our founding in 1969, the Lions World Vision Institute has provided the gift of sight to more than 500,000 individuals—men, women, and children—across the globe. We take pride in being the largest eye bank in the world, headquartered right here in Tampa Bay. However, this achievement would not have been possible without a vital community partner, USF Health. For over 40 years, Lions and USF have collaborated to support those who are blind or visually impaired. Despite this impressive history, we recognize that our work with USF is far from complete, and we are committed to intensifying our partnership. In the past year, LWVI and USF have signed a new, more comprehensive affiliation agreement, establishing systematic methods to work together in the fight against blindness and eye disease. This includes collaborative research, treatment, screening, diagnostic, and educational initiatives.



CLINICAL SERVICES



RESEARCH & INNOVATION



PREVENTION & EDUCATION








The next chapter in our invaluable partnership with USF: the Vision Health Center. Opening in 2026, LWVI will construct a dedicated Vision Health Center in Ybor City to provide essential sight-related services to the surrounding communities. In line with our affiliation with USF, our two organizations will collaborate to explore opportunities for joint efforts in world-class research, advanced clinical care, and necessary screening and diagnostic services at the Vision Health Center.



Vision In Action

The Vision Health Center will be located directly across from LWVI headquarters. This three-story building includes two floors of parking and 20,000 square feet of clinical and community space, reflecting the historic beauty of Ybor and offering room for future expansion, including a rooftop space with stunning views.



-  A welcoming lobby, designed for hosting field trips, large gatherings, and providing a pre-function area for seminars and training
-  The clinical space will have 12 exam lanes and an urgent care lane, serving the community and triaging non-urgent emergency vision patients
-  The new home of LWVI's Research and Development will focus on groundbreaking research to find treatments and cures for ocular diseases
-  State-of-the-art Education and Training space, divisible into two rooms, serving as a hub for surgical training, community education, and hands-on learning
-  Shared spaces include an employee breakroom and conference spaces
-  The LWVI Foundation and Pediatric Vision Health team will relocate to the new facility, using the Glazer Mobile Vision Clinic for outreach and referrals to the Center
-  The Optical Center will initially provide same-day eyeglass fittings for eligible pediatric patients in need in partnership with local Opticianry programs

Vision In Action



CLINICAL SERVICES



RESEARCH LAB



CHILDREN'S VISION SPACE



STATE OF THE ART EQUIPMENT



STAFF WORKSPACE



EDUCATION AND TRAINING

Visit www.lwvi.org for additional renderings and project updates

Build Your Legacy with our Invitation for Investment

You are the key to bringing this vision to life. We're counting on the generous support of our Tampa Bay and LWVI community. To meet our \$12 million project goal, we need to raise \$3 million in charitable contributions. Because of LWVI's strong financial management and 4-star rating from Charity Navigator, we're maximizing every available dollar through tax incentives and government funding, which has already secured half the total funds.

Now, we're asking for your help to complete this journey. With your involvement, **you can be the hero** who brings this vision to life and creates a legacy that will benefit our community for generations. We'd love to explore ways to align a naming opportunity with your personal or business goals. You can spread pledges over three years for added flexibility. To learn more or set up a meeting, please contact Sharon Boyes, CFRE, Foundation Executive Director, at 813-289-1200 ext. 714 or via email at Sharon.Boyes@LWVI.org. We look forward to working with you on this incredible mission!

Naming Opportunities

Building Main	\$1,000,000	<u>End</u> Conference Room	\$25,000
Parking Entrance/Exit	\$500,000	Collaborative Breakroom.....	\$25,000
Education and Training Center	\$250,000	Interior Training Rooms (4)	\$25,000
Main Lobby	\$250,000	Pediatric Exam/Screening Room (4) .	\$25,000
1st Floor Lobby	\$100,000	<u>End</u> Ex. Director Office.....	\$10,000
2nd Floor Lobby	\$100,000	Research Director Office	\$10,000
Research Center	\$50,000	Kitchen Exterior.....	\$10,000
Optical Lab	\$50,000	Work Room	\$10,000
LWVI Foundation Offices	\$50,000	AV Sponsor.....	\$10,000
Reception Desk	\$50,000	Training Room Table/Chairs (4)	\$10,000
Mission Marque.....	\$50,000	<u>End</u> Giving Wall	\$10,000
Collaborative Workspace	\$25,000	Donor Wall Tiles.....	\$1,000-\$5,000



WAYS TO GIVE

GIFTS OF CASH

The easiest and most direct way of supporting this campaign is a gift of cash.

GIFTS OF STOCK

Avoid capital gains while taking a full-value deduction on your tax returns by making a gift of highly appreciated stock.

QUALIFIED CHARITABLE DISTRIBUTIONS

If you're over 70 ½, you can meet the required minimum distribution from your IRA by making a qualified charitable distribution of up to \$100,000 per year; you'll also lessen your taxable income.

RECURRING GIFTS

Recognizing that many caring people may not have the capacity to make a sizeable gift at any one time, we suggest splitting your gift into manageable monthly gifts.

MATCHING GIFTS

Many employers offer opportunities to match employee gifts.

PLANNED GIFTS

Include LWVI in your estate plans and leave a legacy for your community.

Questions?

Please contact Sharon Boyes, CFRE, Foundation Executive Director, at 813-289-1200 ext. 714 or via email at Sharon.Boyes@LWVI.org.

Lions World Vision Institute Leadership

Did You Know....



- 1 billion people live with vision impairment that could have been prevented or corrected.
- Unaddressed distance vision impairment is 4x more prevalent in low and middle-income regions.
- \$14.3 billion is needed to treat existing cases of refractive error and cataracts worldwide.



- U.S. ranks 5th among countries with the highest incidence of visual impairment.
- Vision loss and eye-related disorders exceeds more than \$153 billion every day.
- Cataracts are the top cause of blindness among older adults.



- 490,120 Floridians have a visual impairment.
- Florida is 2nd in the U.S. for macular degeneration, glaucoma, and cataracts.
- Florida is 3rd in diabetic retinopathy.

INSTITUTE BOARD OF DIRECTORS

Carl Tremonti, Chair
Edwin Narain, Vice-Chair
Steve Short, Treasurer
Andrew McIntosh, Secretary
Benjamin Lambright, Medical Director
Sanjay Chheda
Peter Dianico
Mike Griffin
Felicia Harvey
Douglas Pace
Mark Pitts
Jane Rady
Dr. Cliff Salinger

Jason Woody, President and CEO

FOUNDATION BOARD OF DIRECTORS

Steve Csenge, Chair
Kimberly Murray, Vice Chair
Hermann Wittje, Treasurer
Moses Allen, Secretary
Dara Abraham
Gayle Guyardo
April Lufriu
Brandi Morris
Neal Sivyer
Andreina "Andi" Simmons
Dawn Ullom

Sharon Boyes, Foundation Executive Director



Mission Statement:

To elevate standards in sight restoration, tissue transplantation, research, and education.

The Lions World Vision Institute Foundation serves as the stewards of a very precious gift – the gift of sight. As the charitable arm of the Lions World Vision Institute, we are grounded in the belief that everyone deserves the gift of sight. We restore sight in our community and around the globe through various programs.

1410 N. 21st. | Tampa FL 33605
813.289.1200 | foundation@lwvi.org
www.LWVI.org/vision-health/

